



SWITCH-Asia Programme

Advocating, Enabling and Financing for
Impactful Delivery

4-5 July, Naypyitaw, Myanmar

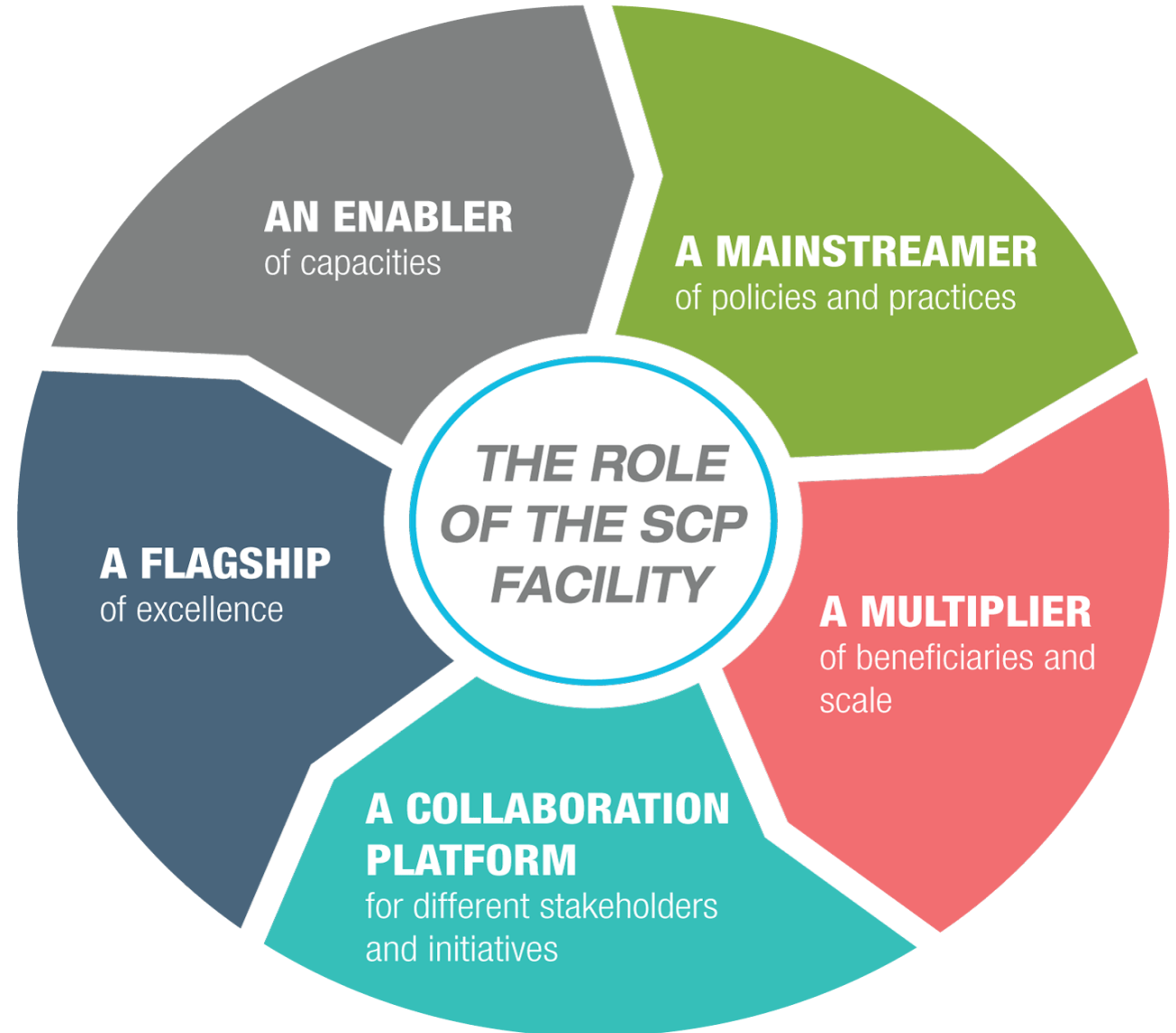
Ira Larasaty

SWITCH-Asia SCP Facility



The SWITCH-Asia Programme

*RPAC/UNEP
GRANT Projects
SCP Facility*





INDONESIA



SDGs



Hivos
people united



Local Harvest

Promoting Sustainable and Equitable Consumption and Local Food System

Local Harvest contributes to economic prosperity and poverty reduction by promoting a switch to sustainable consumption and production of green, healthy, fair and local food by consumers and MSMEs.



SDGs



PLAN
INTERNATIONAL



MATA KAIL

Promoting Sustainable Consumption and Production in the Fish Processing Sector

MATA KAIL empowers SMEs and MSMEs through support on sustainable fisheries processes, products and services, which will promote employment opportunities to marginalized youth, particularly young women.

LAO PDR



SDGs



giz



Luang Prabang: Handle with Care

The Luang Prabang: Handle with Care project strengthens responsible tourism and SCP patterns to safeguard a fragile world heritage destination.

MONGOLIA



SDGs



AVSF



StEP EcoLab

Sustainable Textile Production and EcoLabelling

StEP EcoLab guides the shift to sustainable consumption and production in textiles by leveraging key drivers of SCP in Mongolia.



SDGs



SWITCH Off Air Pollution

Energy efficiency advisory and financial intermediation for sustainable housing in unplanned areas of Ulaanbaatar

SWITCH Off Air Pollution promotes sustainable consumption



The main objective of this project is to promote SCP in the construction sector through enabling SMEs to switch to more resource-efficient practices.

MYANMAR



SDGs



Tha Bar Wa

Catalysing Sustainable Water and Energy Management in Food and Beverage Industries in the Ayeyarwady River Basin

Tha Bar Wa promotes cleaner production in the food and beverage industries, contributing to sustainable economic growth in the Ayeyarwady River Basin.



SDGs



SCALE

Upscaling Improved Cookstove Dissemination in Myanmar through replication of best practices from Cambodia and the region

To help manage the demands for woodfuel, SCALE aims to put a market-based dissemination mechanism in place for fuel-efficient improved cookstoves.



SDGs



SMART Myanmar

SMEs for environmental Accountability, Responsibility and Transparency

SMART Myanmar promotes sustainable production practices in the garment industry with the help of technical training on energy, water and waste management, chemical and hazardous waste management, social compliance and human resources management.

NEPAL



SDGs



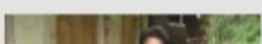
UN HABITAT



PARYA SAMPADA

Sustainable Tourism and Green Growth for Heritage Settlements of Kathmandu Valley

PARYA SAMPADA promotes sustainable development, poverty reduction and climate change mitigation via promotion of sustainable tourism and green growth in Heritage Settlements in Nepal.



SDGs

Bio-Energy Project

Upscaling the Production and Consumption of Bio-Energy to

Cornerstones of the Programme

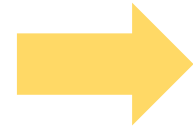
Intervention Areas

**Framing
SCP**

**Alignment,
Engagement and
Co-creation**

**Enabling
capacities**

**Proactive
stimulation of
demand**



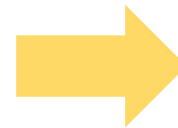
Strategic Formats

**Knowledge/policies/
Tools/mechanisms**

**Communication
Advocacy**

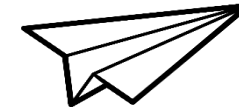
**Multipliers
Empowerment
Capacity Building**

**Communities
of Interest
Commitment**

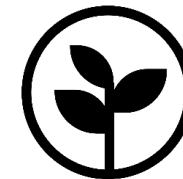


Delivery

**Scaling up
Replication**



**Impact
Sustainability**



**Localization
Transformative**



Needs based approach



Thailand, Philippines, Sri Lanka, Indonesia, India, Pakistan, Vietnam, Cambodia, Mongolia, Bangladesh, Nepal, Bhutan, Lao PDR, Myanmar



Sri Lanka
India
Mongolia
Afghanistan
Nepal



Thailand
Philippines,
Sri Lanka, Indonesia
India, Pakistan
Vietnam, Cambodia
Mongolia
Bangladesh, Nepal
Bhutan, Lao PDR
Myanmar



Bangladesh, Sri Lanka, Indonesia, Pakistan, Vietnam, Cambodia, Mongolia, Malaysia, China, Myanmar, Lao PDR



Philippines
Malaysia



Maldives
Philippines
Sri Lanka
Thailand
India
Mongolia
Nepal
Bhutan
Lao PDR
Myanmar



Thailand, Philippines
Indonesia, India
China, Maldives
Vietnam, Cambodia
Lao PDR, Myanmar

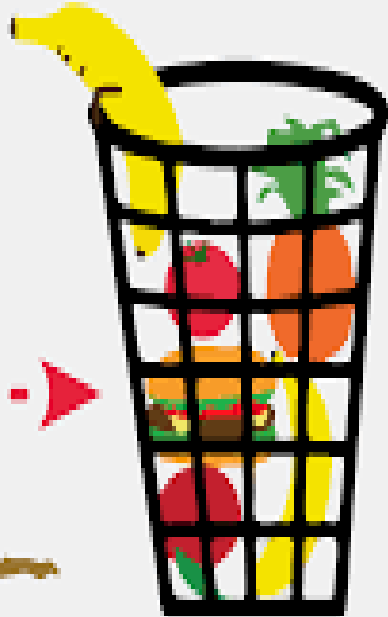


Sri Lanka
India

The Mega Trends

Did you know that...?

one third
of all **food**
goes to
waste



That's why the Global Goals
focus on responsible consumption



12 RESPONSIBLE
CONSUMPTION
AND PRODUCTION



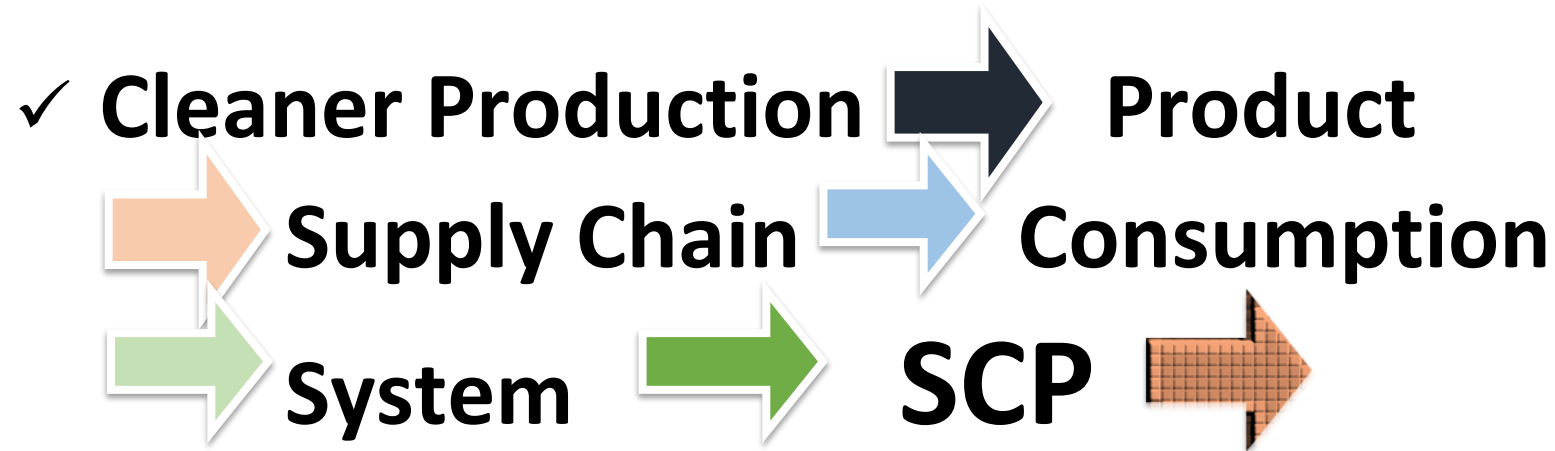
If the global
population
reaches
9.6 billion
by 2050,
the equivalent
of almost
three planets
will be
required to
sustain current
lifestyles



REDUCE
REUSE
REFILL
RECYCLE
RETHINK

12 RESPONSIBLE
CONSUMPTION
AND PRODUCTION



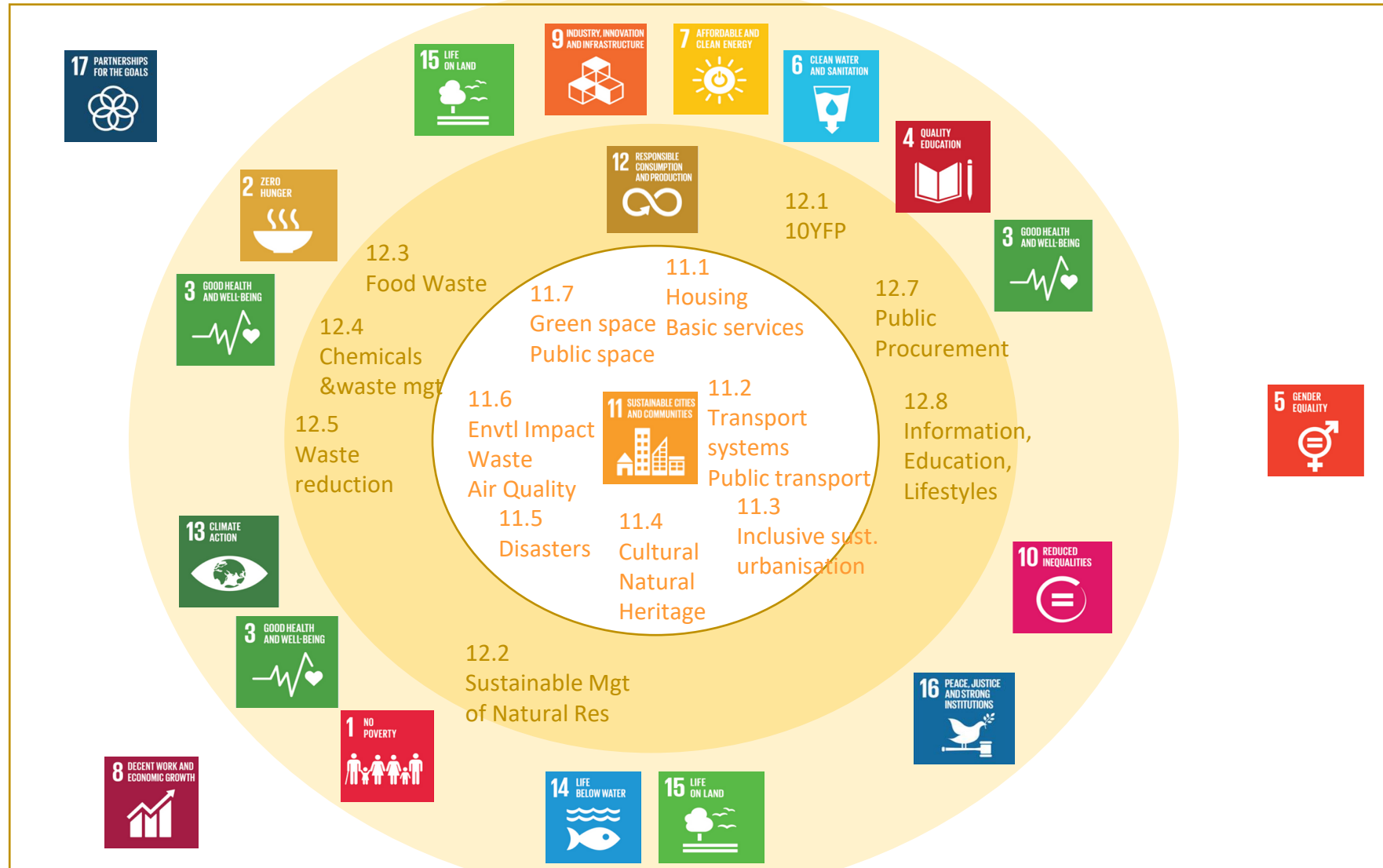


- Of concern to & direct responsibility of Government/public, private/business, civil society and consumers;
- SYSTEM Approach and life cycle analysis (LCA) /life cycle management (LCM)**





SCP in the SDGs





Elements of SCP



- ✓ **Consumption & Production programmes/activities exist in all countries**
- ✓ **Embedded in other policies but need more explicit identification**
- ✓ **Need to better mainstream SCP in existing policies, unless need for SCP specific policy/action plans**
- ✓ **Approach through resource efficiency and economic case essential**
- ✓ **SCP, critical for effective GG/GE/CE/SD and CC transformative actions**
- ✓ **Mutually supportive**

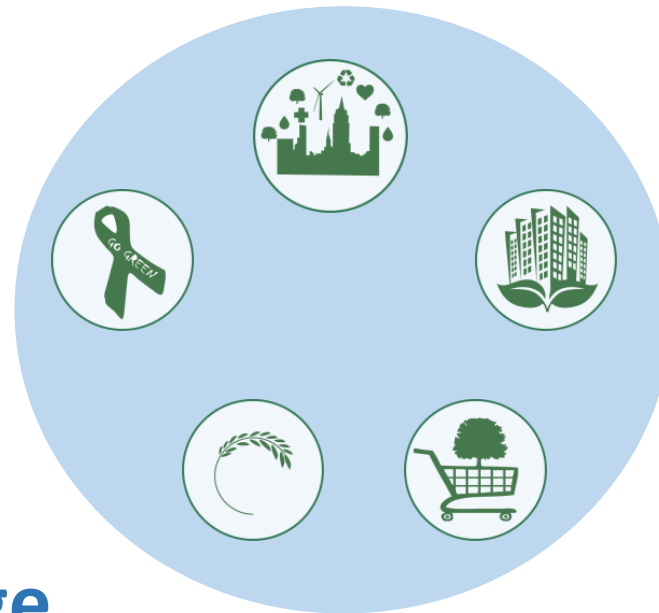
Develop & deliver integrated solutions and pathways to:

Resource Efficient & Resilient Cities

**Sustainable
Lifestyles**

Waste/Plastics

Behavioural Change



**Green Buildings &
Construction**

Tourism

GPP/SPP-EL

Factors necessary in TRANSITION

12 LIVE
BETTER



- ***KNOWLEDGE (Creation)***
- ***INNOVATION (Incentives)***
- ***PRODUCTS (Design)***
- ***CONSUMERS (Behaviour)***
- ***GOVERNANCE (Delivery)***



What is needed?

- **Scale-up, Expand and Replicate good practices**
- **Provide adequate/tailored Capacity Building to stakeholders**
- **Create platforms and induce collaboration between stakeholders**
- **Induce the establishment of an adequate SCP national Multi-stakeholders consultation platform/institutional mechanism**
- **Demand-driven**
- **Our role:**
 - **induce, catalyze, support, engage other partners**
 - **prepare for the right next step to “do more and better with less”**
 - **to effectively engage in a truly transformative process towards SD through SCP**



WHAT YOU CAN DO!

BY: MARGREET DE HEER

BUT WHAT CAN WE DO?

WE ARE NOT IN GOVERNMENT OR ANYTHING...

THE MOST IMPORTANT THING IS THAT WE ALL GET ON THE SAME PAGE!
HERE'S WHAT YOU CAN DO:



1. THINK ABOUT IT

2. TALK ABOUT IT

3. DREAM ABOUT IT

4. WRITE ABOUT IT

5. MAKE ART ABOUT IT

6. ACT ON IT



GOAL 12: RESPONSIBLE CONSUMPTION AND PRODUCTION



BY: MARGREET DE HEER

WE MUST MAKE SURE THE PRODUCTION PROCESS FROM MANUFACTURER TO CONSUMER DOES NO HARM TO NATURE NOR HUMANITY AND GENERATES AS LITTLE WASTE AS POSSIBLE!

COMPANIES MUST BE OPEN AND RESPONSIBLE ABOUT THEIR PRACTICES.

PROTECTING WATER, AIR & SOIL

WE MUST HAVE INTERNATIONAL AGREEMENTS FOR THE HANDLING OF HARMFUL CHEMICALS.

WE MUST PREVENT FOOD WASTE!

SALE

SECOND-HAND GOODS

AND KEEP THE PUBLIC INFORMED AND EDUCATED!



THANK YOU

ira@switch-asia.eu

info@switch-asia.eu

www.switch-asia.eu

